



*Siding: D4 Timber
Gables: D4 Timber
Soffit and Fascia: Antique Parchment*



Roofing: Classic Red Slate



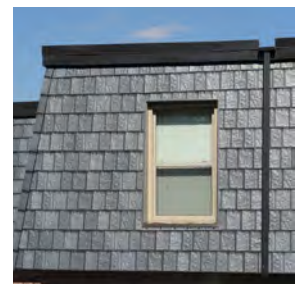
Architect Specifications

Style. Strength. Everlasting.

From churches to senior living complexes, from education facilities to retail store fronts, EDCO's steel exterior building materials give architects versatility and countless design options that will easily complement any type of architecture. From roofing to siding, as well as soffit, fascia and trim, we have products to meet all of your design needs.

Steel roofing and siding give buildings the ability to withstand the most extreme weather conditions without compromising beauty and is backed by a lifetime, non-prorated limited warranty that includes materials and labor.

All of our products are 100% recyclable.





*Siding: Driftwood Gray
Soffit and Fascia: Polar White*

Why Specify Steel Siding or Roofing?

Style and Quality that Lasts a Lifetime

- **Unmatched Lifetime Warranty**
 - Our roofing and siding offer a lifetime, non-prorated limited warranty that includes material and labor.
- **Durable**
 - The durability of our materials result in no chipping, peeling or flaking.
- **Proprietary Finish for Siding**
 - Utilizes the ENTEX cool chemistry paint technology which won't chip, crack or peel, and can also reduce energy costs.
- **Distinctive Style**
 - Achieve a stunning, natural look with our Enduragrain embossed siding.
- **Clean Appearance**
 - Steel siding can be installed without nail heads exposed to the outside of your home. In addition, seams are lapped.
- **Safe to Use**
 - When cutting steel panels, contractors are not required to wear respirators to reduce dust exposure.
- **Fire Safety**
 - Steel siding is non-combustible which will help reduce the possibility of fire.
- **Virtually Maintenance-Free**
 - Consistent look with 30-40-year fade warranty, depending on the product.

EDCO Products Inc.

Innovation. Quality. Service.

Product quality and innovation is at the heart of everything that we do - always has been, always will be. Since 1946, EDCO has manufactured the building industry's most extensive line of maintenance-free exterior products. With a relentless dedication to quality and service, our products are designed and built to stand the test of time.

EDCO has become synonymous with inspiring style, unmatched durability and impeccable quality. Millions of homeowners have trusted EDCO to protect their most valuable assets - their home and family. Find out more about us at edcoproducts.com.



EDCO Warranty Plus

Gives you peace of mind today and into the future.

All warranties are not created equal. Be sure to read the fine print of any product you are considering. We back every one of our products with the best warranty in the industry. At EDCO, we manufacture all of our products here in the U.S.A. and we stand behind our quality to ensure our customers are completely satisfied with their purchase.

Material Ratings and Performance

Roofing Material Specifications

- **Slate:** ASTM A653 CS Type B Steel - 28 gauge G90 galvanized steel.
- **Shake:** ASTM A653 CS Type B Steel - 30 gauge G90 galvanized steel.
- **Minimum slope:** 4" in 12"
- **Coverage:** 12" x 50" (4.17 sq. ft.) panel
- **Qty per box:** 12 panels/50 sq.ft.
- **Weight per box:** 47 lbs (slate)
- **Weight per box:** 37 lbs (shake)
- **Clip material:** .024" galvanized steel
- **70% PVDF finish:** Exterior finish is 1 mil thickness with anti-corrosive primer
- **Wash coat:** Interior finish is a 0.2 mil thickness with anti-corrosive primer

Roofing Product Ratings

- **Florida Building Code** - FL4077 (Shake)
- **Texas Dept of Insurance** - RC-170 (Shake)
- **Canadian Construction Materials Centre** - CCMC 13380-R (Shake)
- **Uplift Resistance - UL-1897:** Up to 160 mph rating with 5 clips and screws
- **ICC-ES Evaluation Report** - ESR-3564 (Arrowline Slate, Generations and Infinity)
- **UL 1897:** Uplift Tests for Roof Covering Systems
- **UL-2218 Hail/Impact Resistance:** Class 4 rating (highest possible rating)
- **UL-790 Fire Resistance:** Class A over Densdeck, Class A over Verashield, Class C over 30# felt paper

Roofing Coating Performance

- **ASTM D-3361 Accelerated Weathering.** Hours: 1,000. Chalk: Rating 8. Color: 5E Hunter units maximum.
- **ASTM B - 117 Salt Spray:** Hours: 1,000; Scribe rating: 7 1/16"; Field: rating 10, no adhesion loss or blisters.
- **ASTM D-2247 Humidity:** Hours: 1,500; Rating: 10, no blisters, cracking or softening.
- **ASTM D-4145 Formability.** OT to 1T
- **ASTM D-3363 Pencil Hardness:** F to H
- **ASTM D-2794 Reverse Impact:** 80 lbs with no loss of adhesion
- **ASTM D-523 Specular Gloss:** 8-12% at 60
- **ASTM D-522** (Elongation over 1/8" Cylindrical mandrel): No loss of adhesion
- **ASTM E-84 Flame Hazard Test:** Class A/ Class 1 coating.
- **ASTM D-5402 Cure Test:** 100 rubs
- **ASTM A653** - Standard Specification for Steel Sheet, Zinc Coated (Galvanized) or Zinc-Iron Alloy Coated (Galvannealed) by Hot-Dip Process.
- **ASTM D2244** - Standard Practice for Calculation of Color Tolerances and Color Differences from Instrumentally Measured Color Coordinates

Siding Material Specifications

- **Siding:** ASTM A653 CS Type B - 28 gauge G60 galvanized steel.
- **Base Metal Thickness:** 0.015 inch (0.397 mm)
- **Avg. Film Thickness:** Entex finish is 1 mil thick
- **Paint Preparation:** Both sides chemically cleaned with Henkel 8686 cleaner. Dry in place chrome conversion coating with Henkel Bonderite 1402W applied to both sides.
- **Qty per carton: D4" and 8" -** 12 pieces (100 sq. ft.); **D5" Dutchlap** - 10 pcs (100 sq. ft.); **Single 6"** - 16 pcs (100 sq. ft.); Vertical - 10 pcs (100 sq. ft.)



800.593.2680
edcoproducts.com



8700 Excelsior Boulevard,
Hopkins, MN 55343